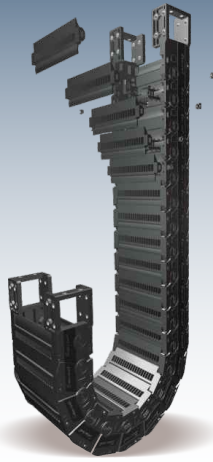


Sabin Type Cable Drag Chains



FULLY ENCLOSED SABIN CABLE DRAG CHAINS

(SB045E, SB060E, SB075E)

CPS045E

Bending Radius R	90	110	135	165	185	235	285
Lp	463	526	604	699	761	918	1,075
Lf	224	244	269	299	319	369	419
H	268	308	358	418	458	558	658

CPS060E

Bending Radius R	125	135	150	180	230	270	340
Lp	633	664	711	806	963	1,088	1,308
Lf	299	309	324	354	404	444	514
H	358	378	408	468	568	648	788

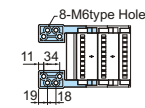
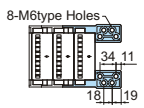
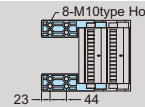
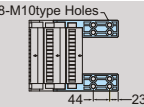
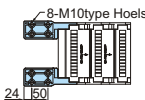
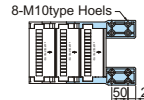
CPS075E

Bending Radius R	160	180	230	280	330	380	480
Lp	803	866	1,023	1,180	1,337	1,494	1,808
Lf	382	402	452	502	552	602	702
H	464	504	604	704	804	904	1,104
Technical Dimensions (mm)							

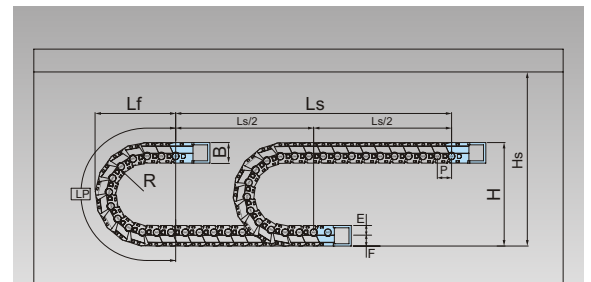
Chain Cross Section

Cat. No.	A	B	C	D	Bending Radius
SB045E.75	105	66	75	45	
SB045E.100	130	66	100	45	90, 110, 135, 165
SB045E.125	155	66	125	45	185, 235, 285
SB045E.150	180	66	150	45	
SB060E.100	140	82	100	56	
SB060E.150	190	82	150	56	125, 135, 150, 180, 230, 270, 340
SB060E.200	240	82	200	56	
SB075E.150	190	108	150	78	160, 180, 230, 280,
SB075E.200	240	108	200	78	330, 380, 480
SB075E.300	340	108	300	78	

End Bracket (Polyamide)

Cat. No.	End Bracket Type	Suitable for Chain Size	Fixed Point	Moving Point
EBF045E. 075/100/125/150	Free	SB045E		
EBF060E. 100/150/200	Free	SB060E		
EBF075E. 150/200/300	Free	SB075E		

Technical Details :	
Chain Material	Glass fibre reinforced Polyamide, UL 94-HB
Noise	30 dB (DIN EN 61672-1)
Mote (IPA)	Class II - VDE2083 ISO Class IV-DIN EN 14644-1
Applications	Semi conductor production line which requires dust regulation minimum class 10, industrial zone which requires cable protection from dust or foreign substance.
Speed	15m / sec
Temperature Range	-40°C to +130°C Continuous
Vertical Installation Lengths	Curve above = max. 6 m Curve below = max. 100 m (045E & 060E) = max. 120 m (075E) Side mounted, Unsupported = max. 2.5~3.0m



Ls : Stroke
Total Length L = LS / 2 + Lp
Safe space Hs = H + 40 mm

