

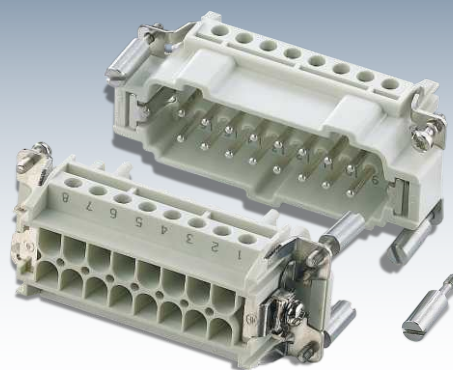


In various applications a bank (group) of male or female identical connectors are placed side by side. In such applications it is difficult to couple the connectors in the right sequence.

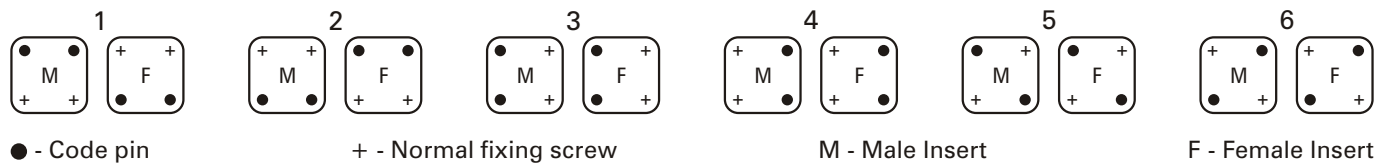
Coding pins are used to prevent such false coupling possibilities. Coding pins are used in place of normal insert fixing screws. In this way coupling of correct connectors is ensured.

Single code pins offer coding possibilities for a maximum of 6 identical connectors placed side by side.

SINGLE CODE PINS



Application with single code pins for 6 connectors side by side



Cat. No.	Type	Material		
WCPS	Single Code Pin	Zinc Plated Steel		